

# FAXCOM<sup>®</sup> LITE *Plus*

An entry-level fax software solution that provides desktop fax capabilities to workgroups

- **A Powerful Entry-Level Fax Solution.**
- **Includes many of the same features and capabilities found in Biscom's enterprise-level fax solutions.**
- **Provides the capability to upgrade to a different fax board and add more fax lines.**
- **Includes everything you need for network users to be sending and receiving faxes within minutes.**
- **Offers a choice of desktop client: either Biscom's workflow-optimized FAXCOM Client or the Outlook Fax Client, which adds fax capabilities to Outlook.**

## Leverage the Benefits of our Award-Winning Software

Since its founding in 1986, Biscom has built a large installed base of fax servers at Fortune 500 companies, government agencies and other organizations across a wide range of industries. Organizations with mission-critical, high-volume, sophisticated faxing needs have looked to us to meet these needs.

Now, Biscom has designed a fax solution expressly for the small business that delivers the same reliability and superior performance as our enterprise-level product.

## Available in Two Versions

FAXCOM LITE Plus consists of FAXCOM LITE Plus software and the Brooktrout® TruFax 200, PCI bus two-channel Loop Start Analog fax board. The software is available in two versions:

FAXCOM LITE and FAXCOM LITE Plus. The following table compares LITE and LITE Plus as a guide in determining which product best meets your needs.

	LITE	LITE PLUS
Number of Phone Lines	2	2 or 4
Analog Phone Lines	Yes	Yes
Direct Inward Dial (DID)		Yes
Receive Faxes to Printers	Yes	Yes
Receive Faxes to Users	Yes	Yes
Thin Client Support	Yes	Yes
Fax Out from any Application	Yes	Yes
Integrate with email		Yes
Native Document Translation		Yes
APIs		Yes
Windows XP/2000/2003/2008 Support	Yes	Yes

FAXCOM LITE and LITE PLUS Comparison

## FAXCOM LITE Plus Software Components

When you run the setup program on the FAXCOM LITE Plus CD, you install the following:

**The FAXCOM service** that interfaces with the telephone network to transmit/receive faxes

**The FAXCOM Queue service** that distributes fax jobs to the FAXCOM service

**The FAXCOM Administrator program** for configuring/managing the FAXCOM service and the FAXCOM Queue service

**The Cover Page Editor program** for creating system-wide and user-specific fax cover pages

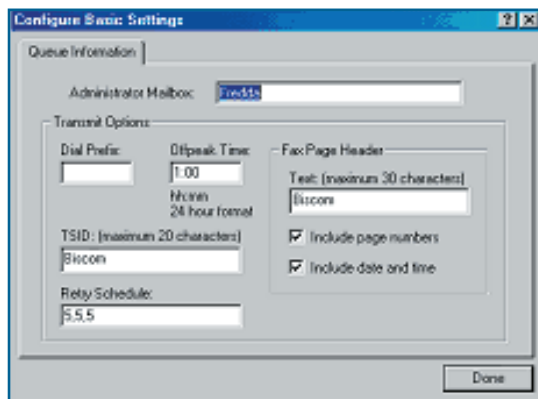
**The FAXCOM Client program** for sending/receiving faxes, which the fax service administrator runs to manage the Public Phonebook of fax recipients and the Pending Queue of all faxes currently queued for transmission

**The FAXCOM Viewer**, a TIFF viewer for viewing received faxes

# FAXCOM LITE PLUS

## Easy-to-use Fax Service Administration

The fax service administrator manages fax service users and all aspects of the fax service via the FAXCOM Administrator program. The administrator needs to specify information on only one tab sheet, Queue Information, to perform the basic configuration. All other configuration is considered “advanced,” done to configure the full functionality of the fax service. The full functionality of the fax service consists of specifying settings for: sending faxes, receiving faxes, managing/monitoring the fax server and fax service.



Queue Information Tab

## FAXCOM LITE Plus Advanced Feature Set

### Number of Phone Lines

FAXCOM LITE Plus supports either two or four phone lines, and any of the following fax boards:

- Brooktrout TruFax® 200, PCI bus two-channel Loop Start Analog fax board
- Brooktrout TR114™ PCI bus two or four-channel combination Loop Start + Direct Inward Dial (DID) Analog fax board
- Brooktrout TR1034™ two or four-channel high performance 33.6 Kbps Analog fax board

### Direct Inward Dial (DID)

FAXCOM LITE Plus supports Direct Inward Dial (DID), whereby incoming faxes can be routed directly to individual users

### Integrate with email

FAXCOM LITE Plus supports integration with email by including an SMTP gateway for sending email messages to fax numbers. As an alternative to the FAXCOM Client, FAXCOM LITE Plus supports the Outlook Fax Client, which adds fax capabilities to Outlook.

### Native Document Translation

FAXCOM LITE supports Native Document Translation, and both FAXCOM Client users and Outlook Fax Client users can attach native files (of the supported types installed on the FAXCOM Server) to their outgoing fax messages.

## Application Programming Interfaces (APIs)

FAXCOM LITE Plus supports Biscom's APIs for developing custom fax communications applications that interface with the FAXCOM Server and integrate fax communications with existing applications and processes.

## Take Advantage of Email Integration

FAXCOM LITE Plus includes an SMTP Gateway, enabling your users to send faxes from their email client. Regardless of their email client, users specify fax recipient information, such as fax number and recipient name, by entering a properly-formatted string in the mail address To field. While the only parameter required to send a fax is the destination fax number, users can include additional parameters to specify additional information.

In addition to the addressing string method, you can have your Outlook users install the Outlook Fax Client, a fully-featured fax client, consisting of one or more of the following components:

**Fax Extensions for Outlook** – installs two fax buttons in the New Message toolbar – the Add Fax Recipient button and the Fax Options and Sender Information button – with which users address faxes and specify transmission information.

**Printer Driver** – to enable sending a fax from any Windows application.

**Add to List Printer Driver** – to enable mail users to attach multiple Windows application files to a single outgoing message.

**FAXCOM Viewer** – to install Biscom's TIFF viewer as the default viewer for received faxes.

### System Requirements

FAXCOM LITE Plus has the following minimum requirements:

- Windows Server 2003/2008  
Windows 2000 Professional or Server/Windows XP Professional
- One dedicated PCI slot
- NTFS file system

**BISCOM**

321 Billerica Road, Chelmsford, MA 01824  
p: 800-477-2472 | sales@biscom.com  
www.biscom.com