

FAXCOM[®] LITE

An entry-level fax software solution that provides desktop fax capabilities to workgroups

- A Powerful Entry-Level Fax Solution.
- Includes many of the same features and capabilities found in Biscom's enterprise-level fax solutions.
- Available as basic FAXCOM LITE or advanced FAXCOM LITE Plus, for sites requiring more fax lines and additional faxing capabilities.
- Includes everything you need for network users to be sending and receiving faxes within minutes.
- Routes incoming faxes to users, groups of users, network printers, and Shared Fax Mailboxes to which multiple users are given access.

Automate Delivery of Fax Communications

Since its founding in 1986, Biscom has built a large installed base of fax servers at Fortune 500 companies, government agencies and other organizations across a wide range of industries. Organizations with mission-critical, high-volume, sophisticated faxing needs have looked to us to meet these needs.

Now, Biscom has designed a fax solution expressly for the small business that delivers the same reliability and superior performance as our enterprise-level product.

Available in Two Versions

FAXCOM LITE consists of FAXCOM LITE software and the Brooktrout® TruFax 200, PCI bus two-channel Loop Start Analog fax board.

The FAXCOM LITE software is available in two versions:

FAXCOM LITE and FAXCOM LITE Plus. The following table compares FAXCOM LITE and FAXCOM LITE Plus as a guide in determining which product best meets your needs.

	LIGHT	LIGHT PLUS
Number of Phone Lines	2	2 or 4
Analog Phone Lines	Yes	Yes
Direct Inward Dial (DID)		Yes
Receive Faxes to Printers	Yes	Yes
Receive Faxes to Users	Yes	Yes
Thin Client Support	Yes	Yes
Fax Out from any Application	Yes	Yes
Integrate with email		Yes
Native Document Translation		Yes
APIs		Yes
Windows XP/2000/2003/2008 Support	Yes	Yes

FAXCOM LIGHT and LIGHT PLUS Comparison

FAXCOM LITE Software Components

When you run the FAXCOM LITE CD setup program, you install the following:

The FAXCOM service that interfaces with the telephone network to transmit/receive faxes;

The FAXCOM Queue service that distributes fax jobs to the FAXCOM service;

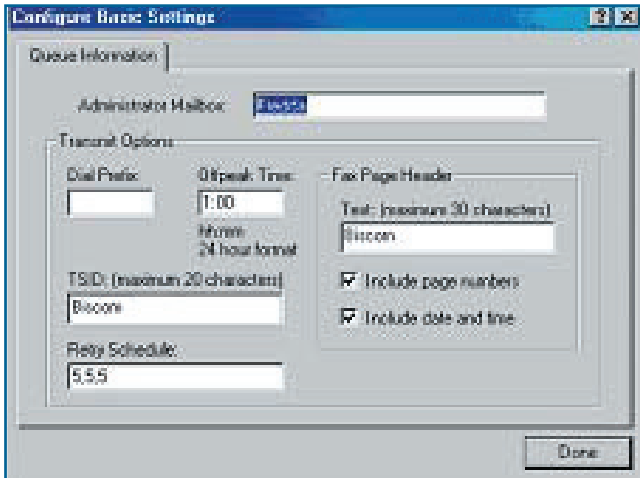
The FAXCOM Administrator program for configuring/managing the FAXCOM service and the FAXCOM Queue service;

The Cover Page Editor program for creating system-wide and user-specific fax cover pages;

The FAXCOM Client software with which individual users configure their personal use of the fax service to send and receive faxes. The client software also includes the **FAXCOM Viewer**, a TIFF viewer with which client users view their received faxes and the **Biscom Fax Printer** that enables the client users to fax from any Windows application. The fax service administrator manages the Public Phonebook of fax recipients and the Pending Queue of all faxes currently queued for transmission.

Easy-to-use Fax Service Administration

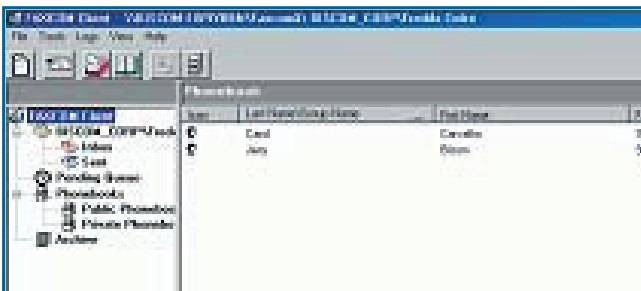
The fax service administrator manages fax service users and all aspects of the fax service via the FAXCOM Administrator program. The administrator needs to specify information on only one tab sheet, Queue Information, to perform the basic configuration. All other configuration is considered “advanced,” done to configure the full functionality of the fax service. The full functionality of the fax service consists of specifying settings for sending faxes, receiving faxes and managing/monitoring the fax server and fax service.



Queue Information Tab

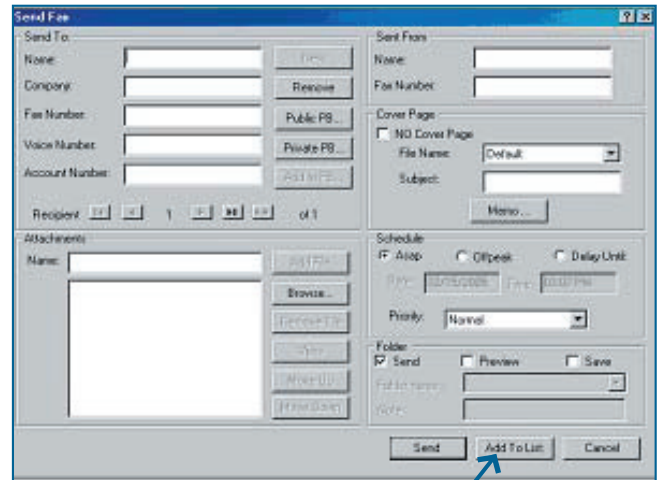
Easy-to-use Desktop Faxing

The FAXCOM client is modeled on the familiar Windows Explorer application, which represents the user's computer as a filing cabinet with folders inside of filing drawers. On the left side of the client window are the folders that contain saved and received faxes, the Pending Queue of outgoing faxes and the Public and Private phone books. Users simply click the appropriate folder to go instantly to its contents.



FAXCOM Client

Users access the easy-to-use Send Fax dialog directly from the FAXCOM Client toolbar. Or they work within a Windows application, select the Biscom Fax Printer and are automatically transferred to the Send Fax dialog with the document they were editing automatically converted to a TIFF file. Users can then click the Add to List button to be returned to the application from which they called the Biscom Fax Printer, or they can open a file in another application, enabling them to build one composite fax with multiple attachments.



Send Fax Dialogue

Users click the **Add to List** button to return to the application whose output they “printed” to the Biscom Fax Printer. They can then open another file in that application and “print” it, or open a file in another application, “printing” it to the Biscom Fax Printer and returning to the Send Fax dialog. Using this patented Add to List feature, users can build one fax with multiple attachments.

System Requirements

FAXCOM LITE has the following minimal requirements:

- Windows Server 2003/2007
Windows 2000 Professional or Server/Windows XP Professional
- Virtualization supported via VMware ESX 3.5 or higher
- One dedicated PCI slot
- NTFS file system

The FAXCOM Solution

The FAXCOM solution allows users to send and receive faxes electronically using their existing computer network. The solution is based on a distributed server architecture that makes fax management and administration simple. The fax server is the component that interfaces with the telephone lines and handles the sending and receiving of faxes. The fax queue is a separate service that manages queuing, retries, internal fax traffic, and delivery to and from the users. Faxes are submitted to the queue by client applications or by automated processes that have been fax-enabled by Biscom APIs.

BISCOM

321 Billerica Road, Chelmsford, MA 01824
p: 800-477-2472 | sales@biscom.com
www.biscom.com