

FAXCOM[®] CV



Certified Partner
Centricity[®] Practice

- Integrates with GE Centricity[®] EMR
- Enables small medical offices/clinics to take advantage of many of the features of Biscom's large-scale, enterprise-level FAXCOM Server solution
- Includes everything you need for your users to be sending faxes within minutes
- Imports fax completion statuses into the patients' chart
- Imports the rendered fax image into the patients' chart
- Sends flags on failed faxes to the original sender or an assigned administrator

Integrates with GE Centricity EMR

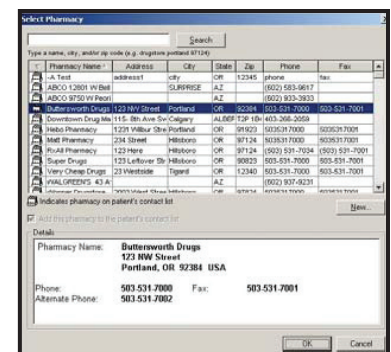
FAXCOM CV is a robust entry-level two-line fax solution that is fully integrated with GE Centricity EMR. Users run their FAXCOM CV-integrated GE Centricity EMR application to do all of the following:

- Fax prescriptions, letters and documents - anything that can be printed
- Select fax recipients from the Centricity Physician Office EMR Contacts list
- View the status of transmitted faxes
- If specified as the fax administrator, resolve any fax transmission errors

Take Advantage of Enterprise-Level Features

Since its founding in 1986, Biscom has built a large installed base of fax servers at Fortune 500 companies, government agencies, and other organizations across a wide range of industries. Large companies with mission-critical, high-volume, sophisticated faxing needs have looked to Biscom to meet these needs.

As a fax solution designed expressly for small offices, FAXCOM CV includes many of the same features developed for large, multi-site companies who insist on superior reliability and performance. Moreover, FAXCOM CV was specifically designed to enable offices without a dedicated technical staff to be quickly up-and-running with fax capabilities.



Faxing in GE Centricity EMR

	CV	CV Plus
Fax out from Centricity	Yes	Yes
Fax out from any application		Yes
Receive faxes to printers	Yes	Yes
Receive faxes to users		Yes
Two fax phone lines	Yes	Yes
Unlimited fax phone lines		Yes
Windows 2000 & 2003 support	Yes	Yes
Thin Client support	Yes	Yes
Analog fax phone lines	Yes	Yes
Digital (T1, PRI) fax phone lines		Yes
Direct Inward Dial (DID)		Yes
Integrate with email		Yes
Fax archiving		Yes
Job Tracking and Reporting (optional)		Yes
Least Cost Routing		Yes
Native document translation		Yes
APIs		Yes

Includes Everything You Need to Implement a Fully-Featured Fax Solution

The FAXCOM CV package includes the following components:

- A two-channel analog Brooktrout fax board, plus telephone cords, to connect to up-to-two telephone lines.
- Appropriate installation and user documentation from Brooktrout and Biscom.
- The FAXCOM CV software CD, which includes the following:

The FAXCOM Service: interfaces with the fax board to send faxes.

The FAXCOM Queue Service: integrates with GE Centricity EMR.

The FAXCOM Administrator Application: to configure and manage the FAXCOM service and the FAXCOM Queue service.

The Cover Page Editor: to create system-wide and user-specific fax cover pages.

The FAXCOM Client Application: in coordination with the fax service administrator manages the Pending Queue of outgoing faxes and creates a Public phone book of fax recipients for use outside centricity.

Easy-to-use Fax Service Administration

The fax service administrator manages FAXCOM CV users and all aspects of the fax service via the FAXCOM CV Administrator program.

The administrator simply needs to add all locations of care that will be faxing to the 'users' table.

All other configuration is considered "advanced," done to configure the full functionality of the fax service. The full functionality of the fax service consists of specifying settings for: sending faxes and managing/monitoring the fax server and fax service.

Standard Administration Features

Administrators of FAXCOM CV are able to do all of the following through the FAXCOM Administrator program:

- Specify that the server auto insert a "1" prefix when making an outgoing call if it detects the specified long distance fax number contains only 10 digits.
- Specify Retry attempts and intervals, according to the specific transmission error.
- Configure the Resend from Point of Failure capability, whereby you can specify that only the undelivered pages of a partially delivered fax be resent.

- Implement Alarm Monitoring, whereby you can specify certain significant server events to be monitored and the notification method(s) by which you are notified when the event occurs.
- Specify server metrics to be monitored, whereby an alarm is generated whenever a set threshold is exceeded for key server parameters.
- Specify an Offpeak time to automatically transmit faxes when telephone lines are less busy and telephone costs are lower.
- Specify any digits to be added to the beginning of the destination fax number, such as a 9, to exit an office phone system.
- Implement ChargeBack accounting, whereby you can track and bill back fax-related costs according to the fax recipient.
- Implement Usage accounting, whereby you can track fax-related costs according to the fax sender.
- Automatically import Microsoft Domain users to be fax service users.
- Automatically receive the Admin log, which contains information on all faxes sent for the current day.
- Configure the fax server to be associated with more than one area code in locations that have implemented an Area Code Overlay Plan to handle the demand for new telephone numbers.

System Requirements

FAXCOM CV has the following requirements:

- Pentium III system, 1 GHz (or higher)
- 512 MB RAM
- 4 Gigabyte available space
- Windows 2008, 2003 or 2000 Server
- Internet Explorer 5.5 or higher
- One PCI slot
- Dedicated server recommended
- Centricity EMR version 5.6, SPZ or higher